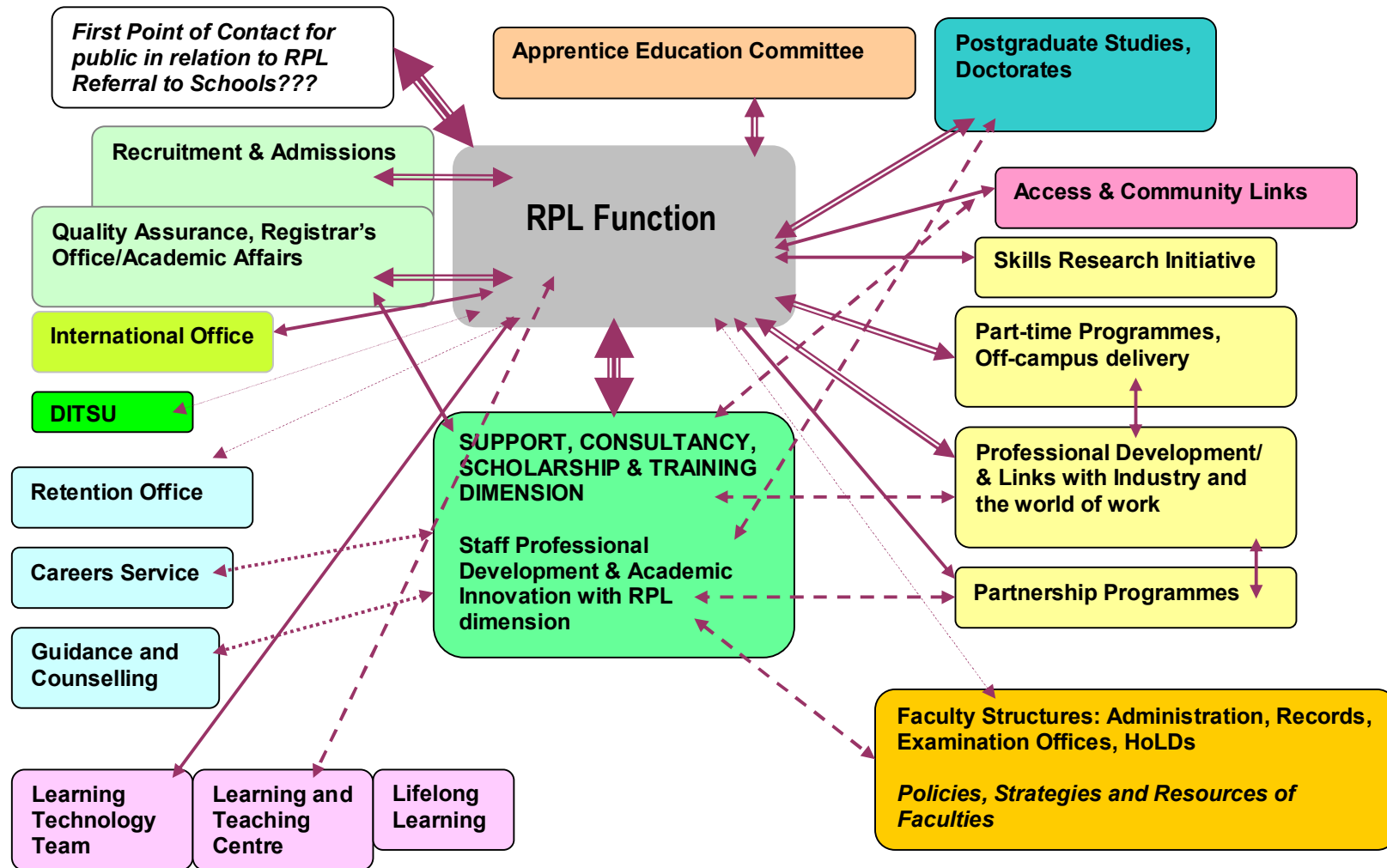
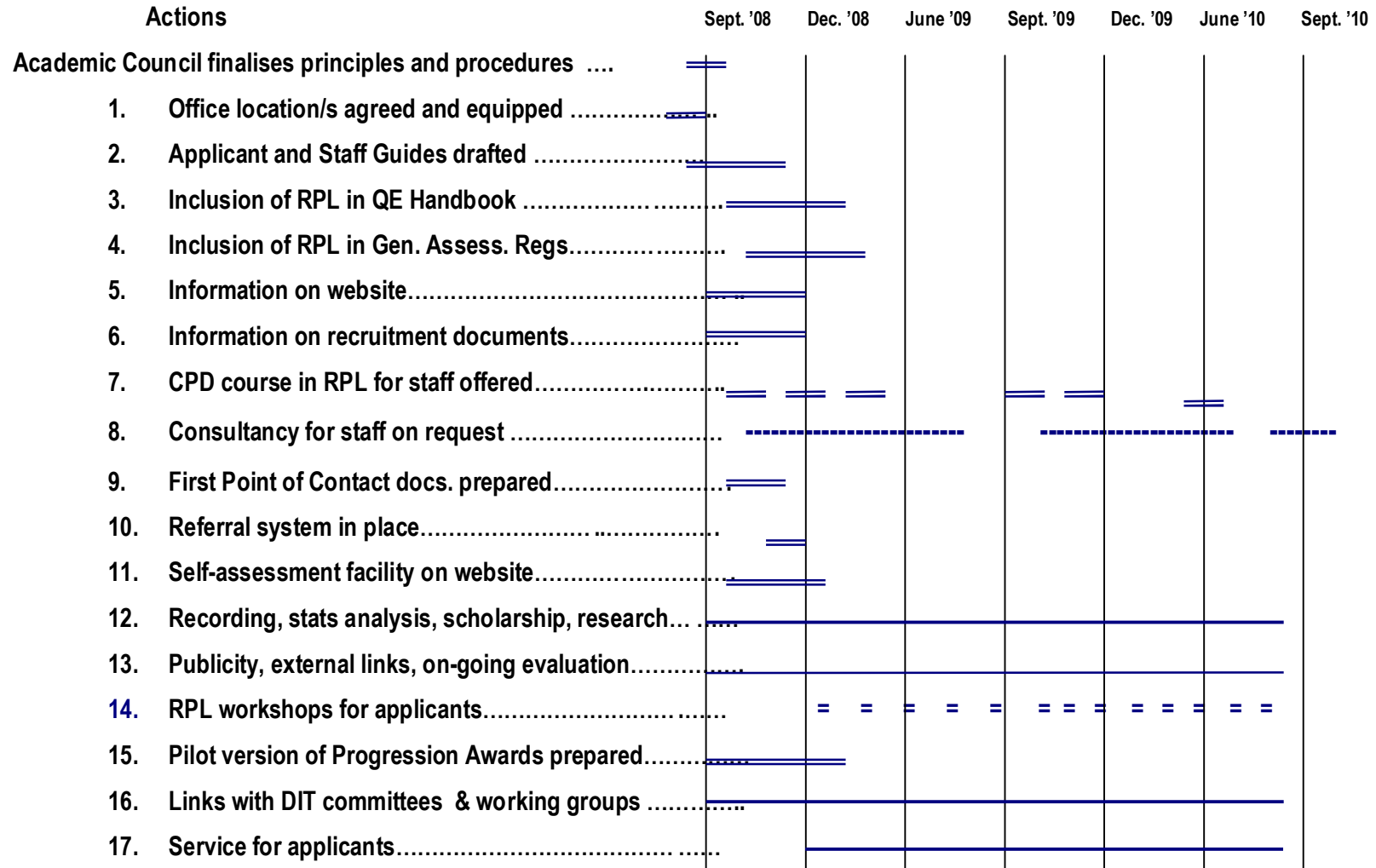


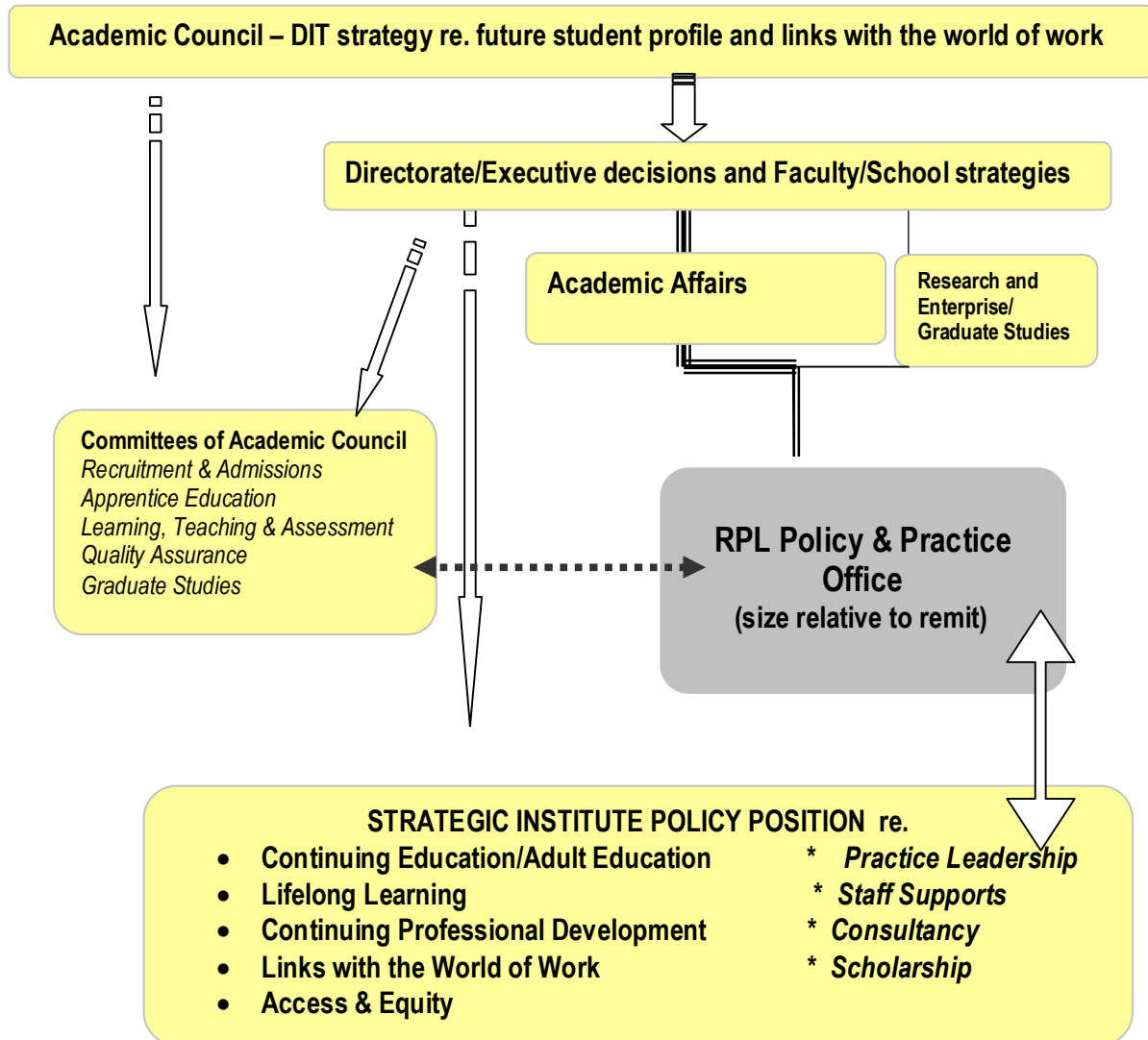
Figure 1: Current and Potential Internal Linkages and Relationships to RPL Function identified in Consultation Process
 (Relative extent of relationships suggested in arrow types. Colours and sizes not significant)



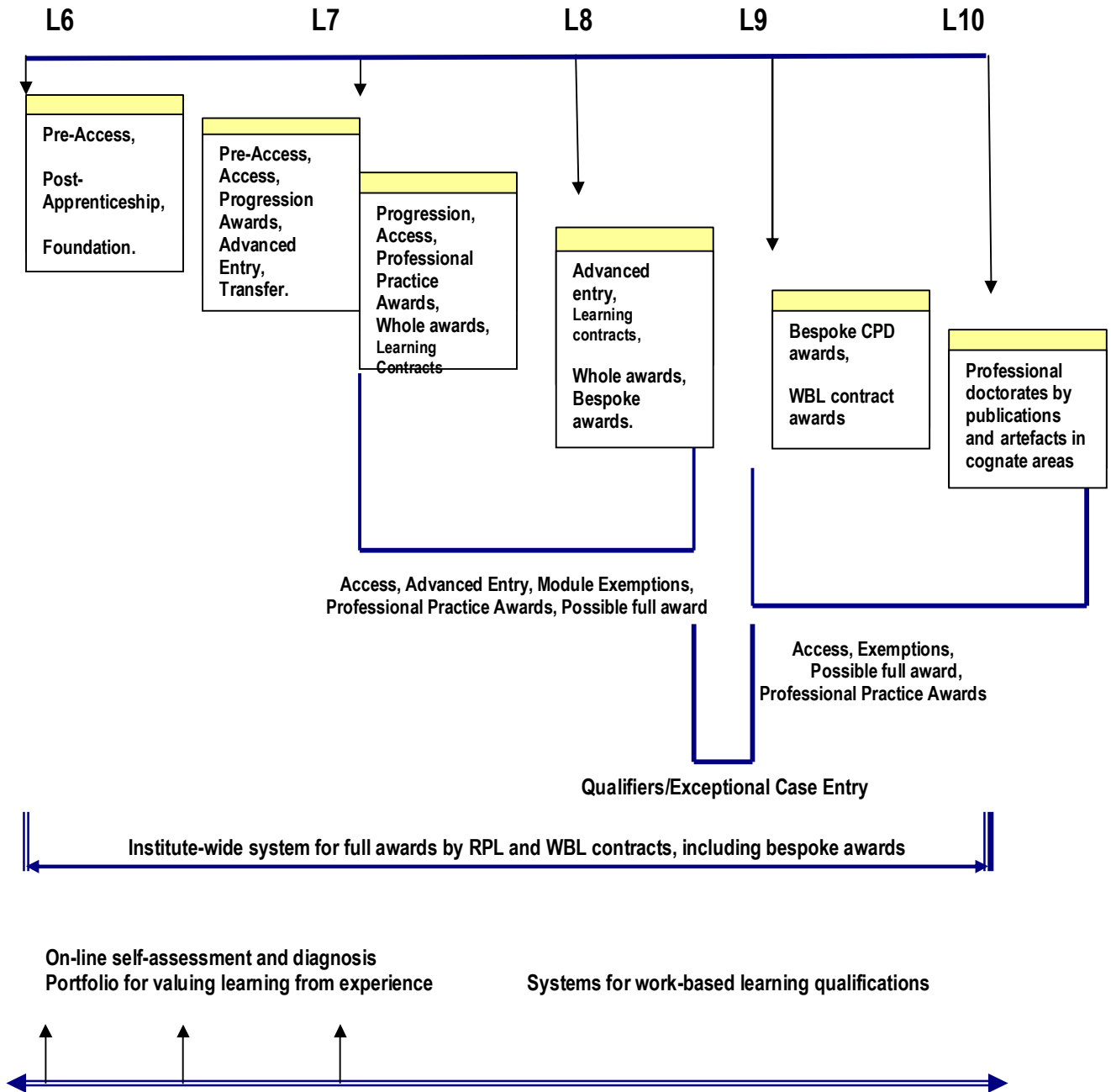
Appendix 1 : Proposed Two-Year Timeline for Initial RPL Implementation Strategy



Appendix 2 : Possible Location of RPL Office within existing DIT structures



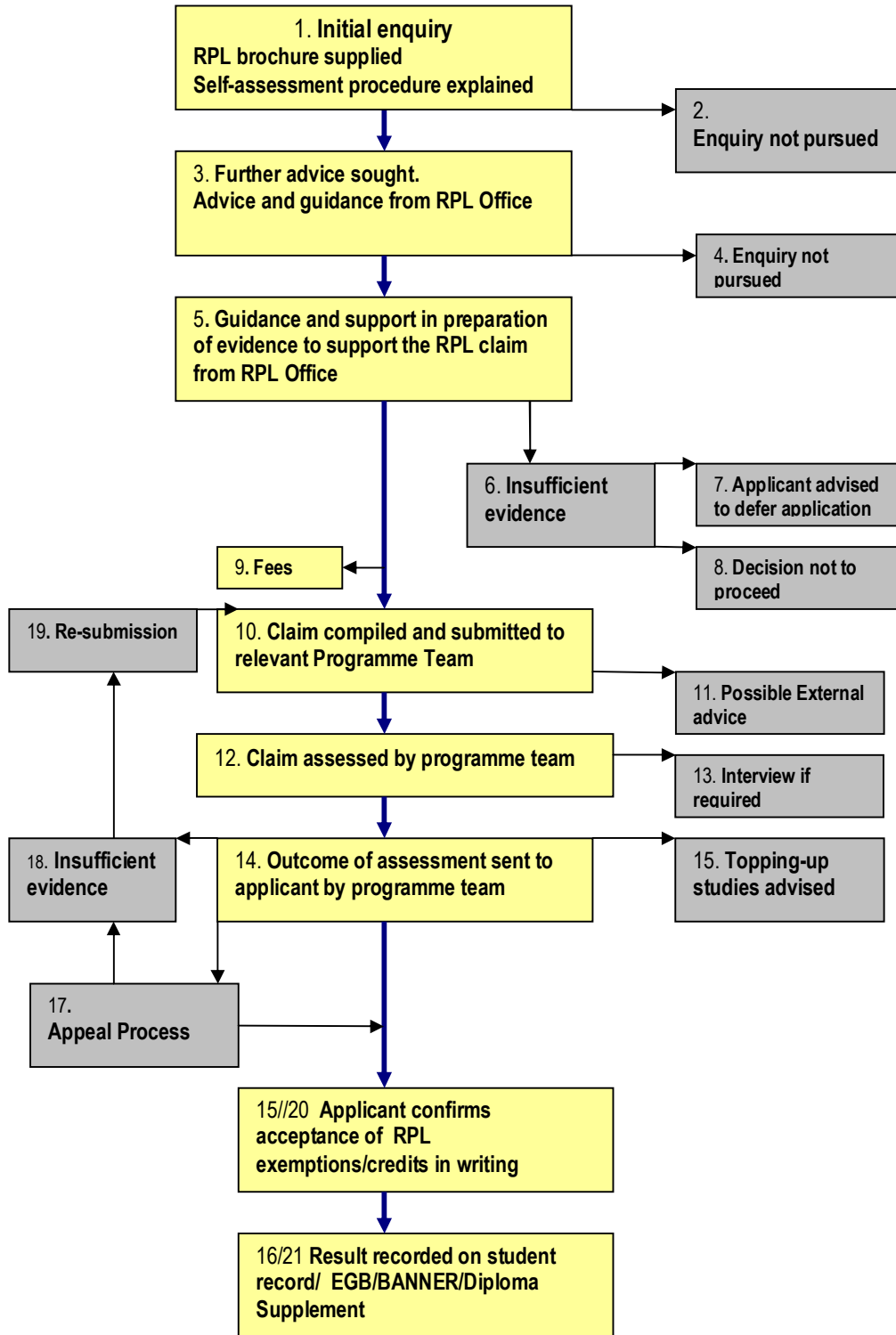
Appendix 3 : Possible RPL Continuum across Levels in the DIT – Expansive Orientation of RPL



Appendix 4: RPL Initial Documents/Resources in Development

For public information	For RPL applicants/students	For DIT staff
Website information	RPL brochure	RPL Guide for staff
Downloadable 2-page brochure	FAQs for applicants/students	FAQs for staff
RPL self-assessment guidance tool on-line	Self-assessment facility	RPL steps (Flow-chart) for module exemptions
FAQs	Worked examples of module exemption claims forms	Generic self-assessment tools for programme modules
	Student Guide to the RPL Process in the DIT	Worked-example of self-assessment tool for module learning outcomes
		Generic RPL assessment exercise in relation to module learning outcomes
		Generic RPPL assessment criteria and assessment report form
		Generic RPL report form to applicants
		Generic Appeal request form
		Generic Appeal report form
		RPL for Valuing Experiential Learning without assessment (developmental model). Process documents.

Appendix 5: Overview of RPL Process for APEL (Experiential/Non-certificated Prior Learning) available for Programmes with high RPL application numbers and modules facilitating RPL at undergraduate level



28 April 2008

Dr A Murphy