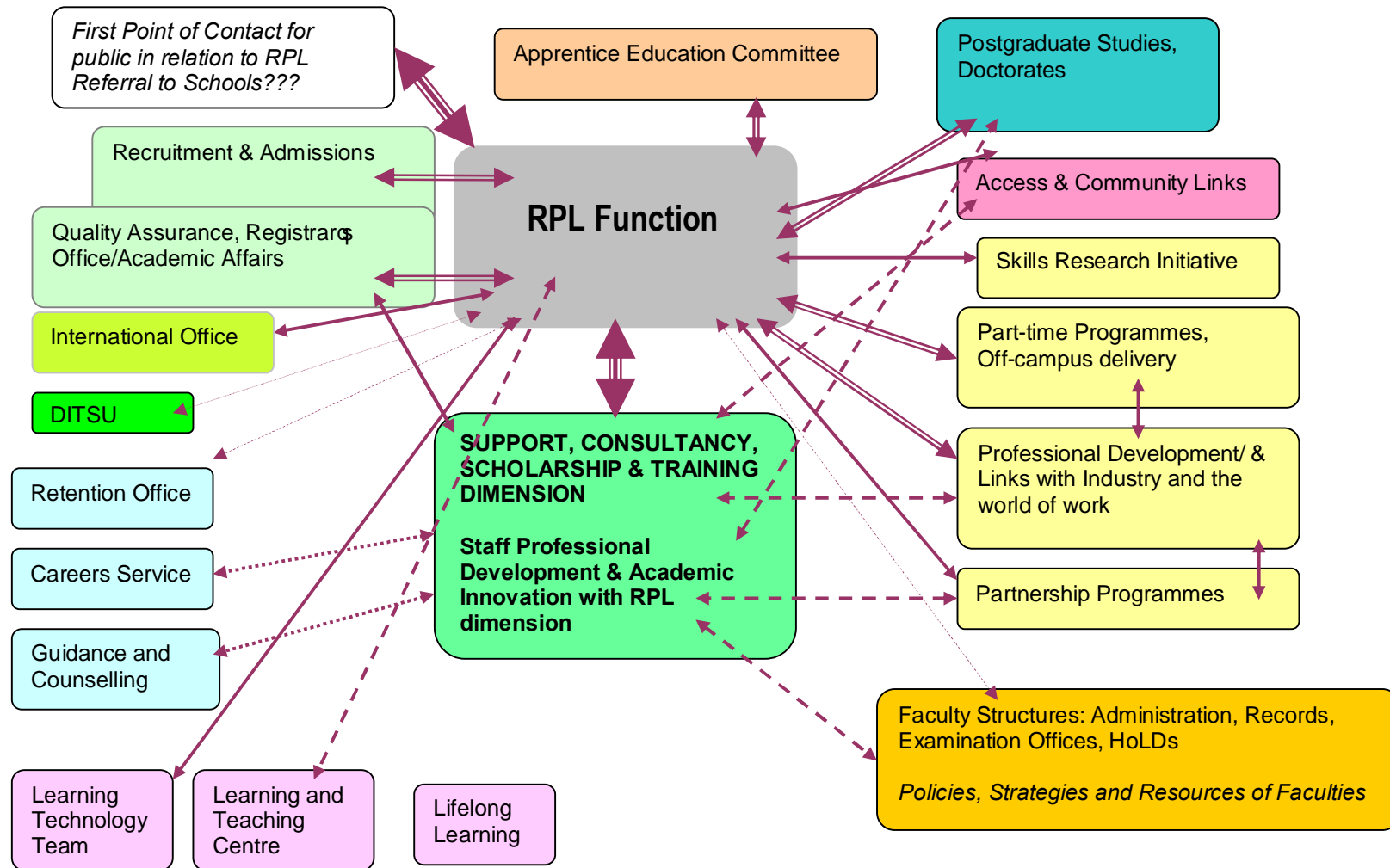
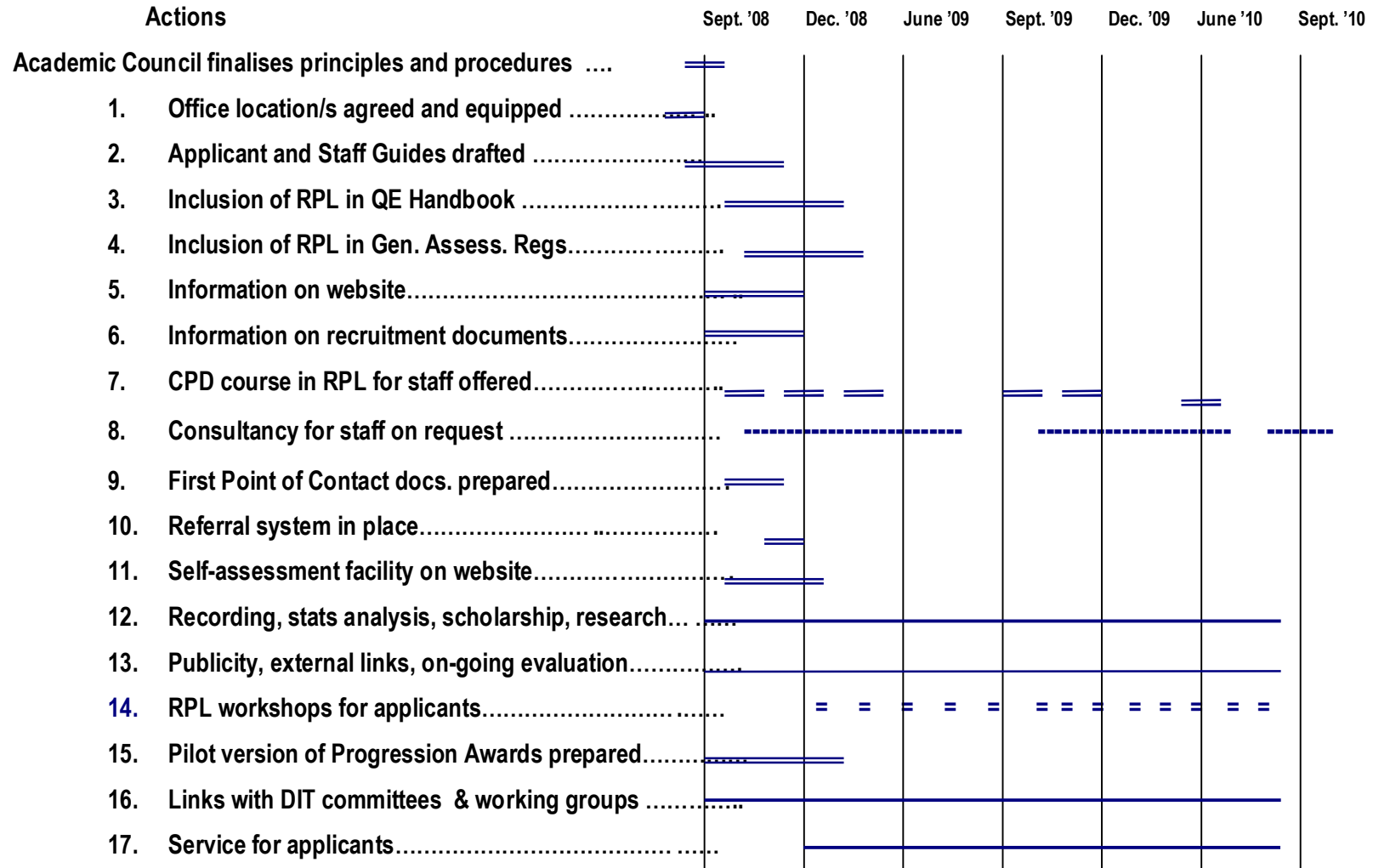


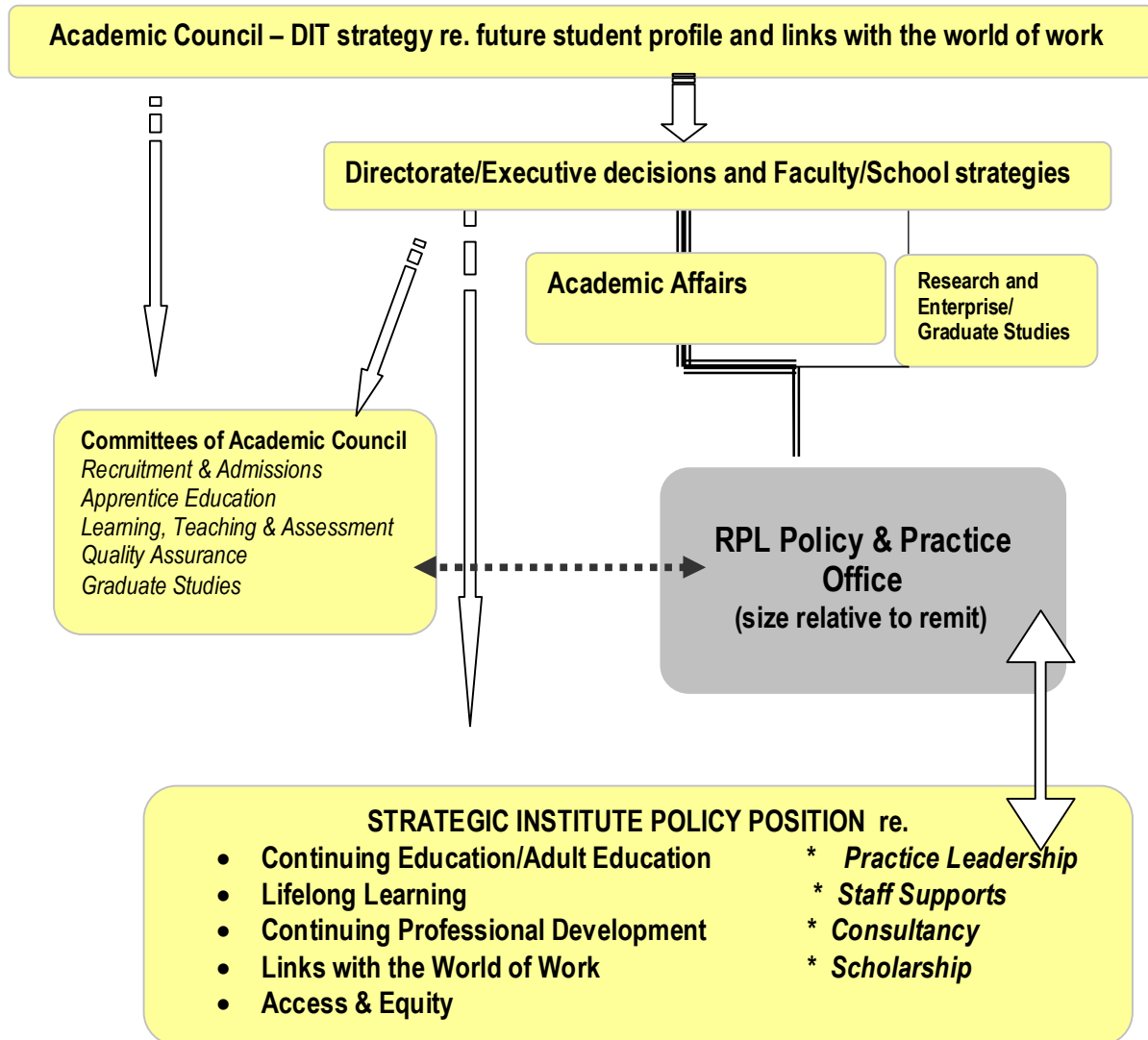
Figure 1: Current and Potential Internal Linkages and Relationships to RPL Function identified in Consultation Process
 (Relative extent of relationships suggested in arrow types. Colours and sizes not significant)



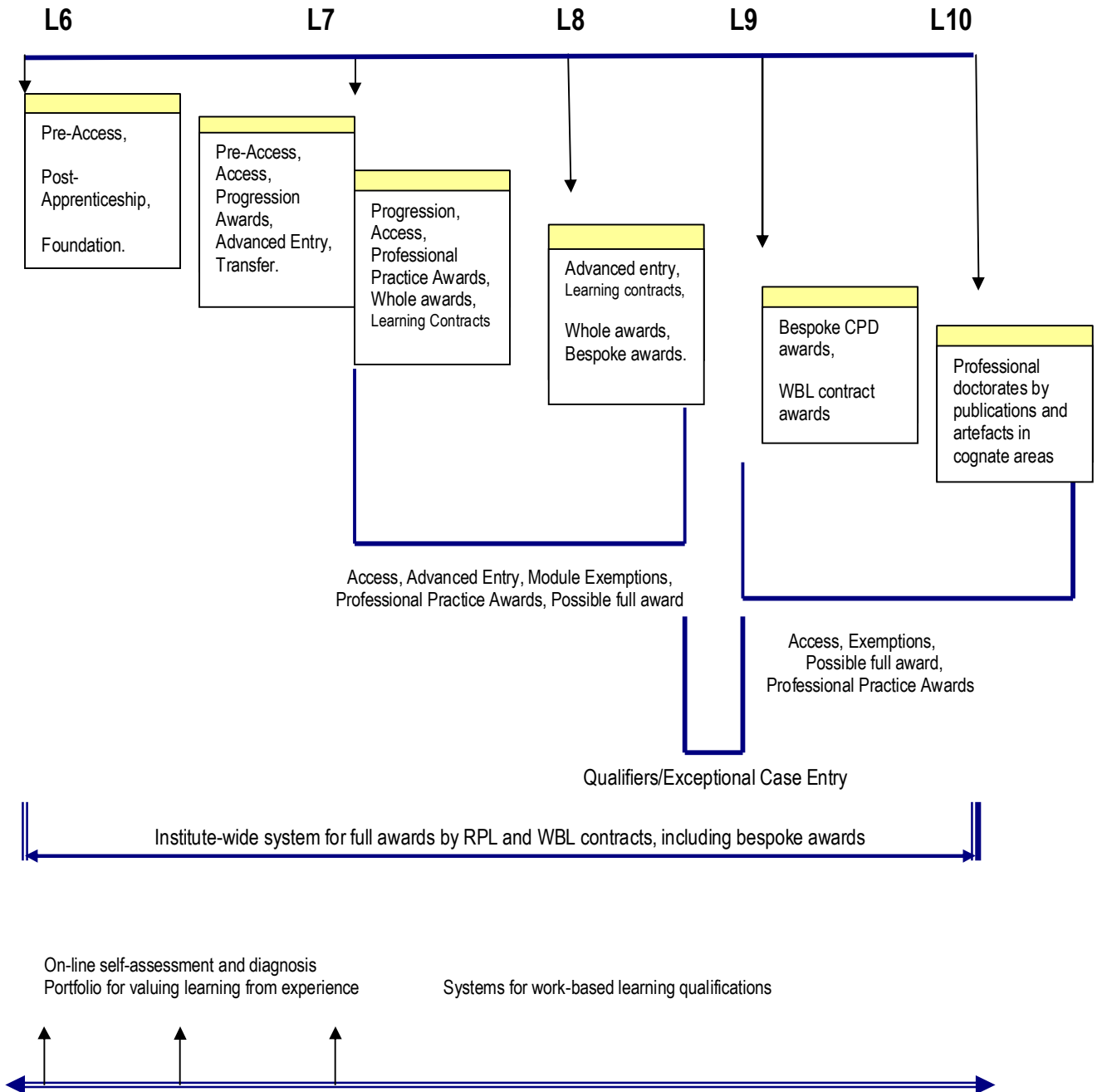
Appendix 1 : Proposed Two-Year Timeline for Initial RPL Implementation Strategy



Appendix 2 : Possible Location of RPL Office within existing DIT structures



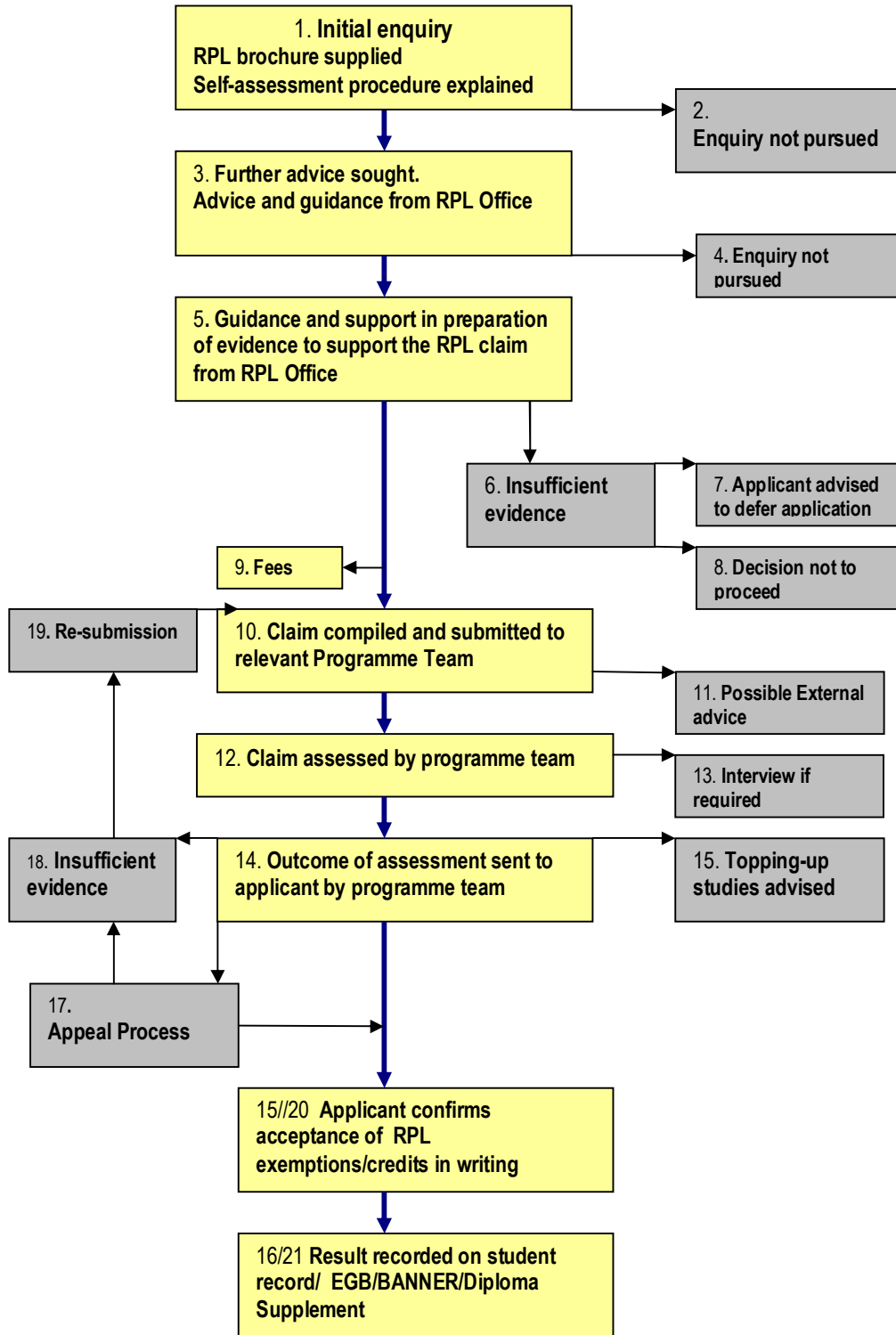
Appendix 3 : Possible RPL Continuum across Levels in the DIT – Expansive Orientation of RPL



Appendix 4: RPL Initial Documents/Resources in Development

| For public information | For RPL applicants/students | For DIT staff |
|---|--|--|
| Website information | RPL brochure | RPL Guide for staff |
| Downloadable 2-page brochure | FAQs for applicants/students | FAQs for staff |
| RPL self-assessment guidance tool on-line | Self-assessment facility | RPL steps (Flow-chart) for module exemptions |
| FAQs | Worked examples of module exemption claims forms | Generic self-assessment tools for programme modules |
| | Student Guide to the RPL Process in the DIT | Worked-example of self-assessment tool for module learning outcomes |
| | | Generic RPL assessment exercise in relation to module learning outcomes |
| | | Generic RPPL assessment criteria and assessment report form |
| | | Generic RPL report form to applicants |
| | | Generic Appeal request form |
| | | Generic Appeal report form |
| | | RPL for Valuing Experiential Learning without assessment (developmental model). Process documents. |

Appendix 5: Overview of RPL Process for APEL (Experiential/Non-certificated Prior Learning) available for Programmes with high RPL application numbers and modules facilitating RPL at undergraduate level



28 April 2008

Dr A Murphy